

LIGHT LINE

Heights: 40 - 60 - 80 - 100 mm

Properties

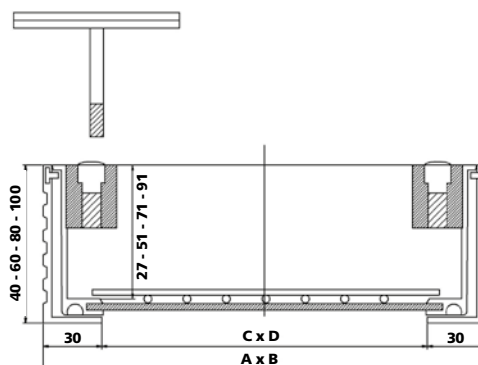
- Frame and cover are made of extruded aluminum profile and are easy to open with the lifting keys.
- Application: outdoor.
- Cover with the cover placed freely in the outer frame.
- Standard equipped with a reinforcement mesh.
- 3 mm galvanized steel plate.
- Two seals: one seal at the base and a T rubber seal incorporated into the outer frame.
- The T rubber seal has three functions:
 - It prevents dirt between the cover and the frame.
 - The rubber's elastic effect avoids tension between the cover and the frame.
 - It offers an additional smell barrier.



Smell proof



Waterproof



HEIGHT

Dimensions A x B (mm)	Opening C x D (mm)	40 mm		60 mm		80 mm		100 mm	
		Weight (kg)	Product no.	Weight (kg)	Product no.	Weight (kg)	Product no.	Weight (kg)	Artikelnr.
300 x 300	240 x 240	3.56	21988	3.86	17739	4.94	17548	4.94	41265
400 x 400	340 x 340	5.73	21989	6.08	17740	6.80	17549	7.43	41266
500 x 500	440 x 440	8.56	21990	8.94	17741	10.09	17550	10.83	41267
600 x 600	540 x 540	11.96	21991	12.25	17742	13.52	17551	14.41	41268
700 x 700	640 x 640	15.61	21992	15.96	17743	17.36	17552	18.39	41269
800 x 800	740 x 740	19.93	23384	20.33	17744	21.86	17553	23.04	41270
900 x 900	840 x 840	24.73	23385	25.11	17745	26.76	17554	28.09	12955
1000 x 1000	940 x 940	30.38	23386	30.73	17746	32.52	17555	33.99	12956