

PRO LINE

Heights: 40 - 60 - 80 - 100 mm

Properties

- Frame and cover are made of extruded aluminum profile and are easy to open with lifting keys.
- Application: indoor and outdoor use.
- The cover is screw tight.
- Standard equipped with a reinforcement mesh.
- The bottom plate is made of a 3mm galvanized steel plate (on request: bottom plate in 3mm aluminum).
- Three seals: two seals at the base and a T rubber seal incorporated into the outer frame.
- The T rubber seal has three functions:
 - It prevents dirt between the cover and the frame.
 - The rubber's elastic effect avoids tension between the cover and the frame.
 - It offers an additional smell barrier.



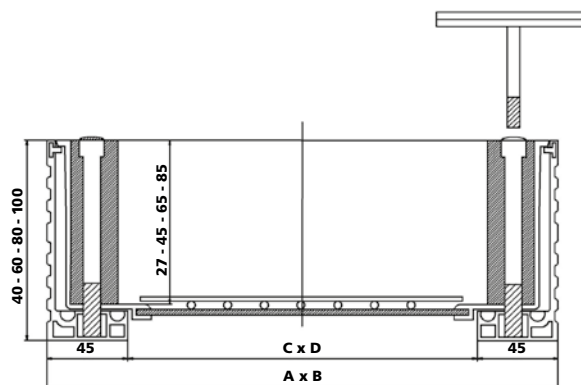
Gas proof



Smell proof



Water proof



HEIGHT

Dimensions A x B (mm)	Opening C x D (mm)	40 mm		60 mm		80 mm		100 mm	
		Weight (kg)	Product no.	Weight (kg)	Product no.	Weight (kg)	Product no.	Weight (kg)	Product no.
300 x 300	210 x 210	3.79	21993	4.11	17785	5.21	17	5.82	20053
400 x 400	310 x 310	5.96	21994	6.27	18131	7.56	18	8.31	20531
500 x 500	410 x 410	8.59	21995	9.06	18132	10.37	19	11.25	20532
600 x 600	510 x 510	12.00	21996	12.30	18133	13.80	20	14.83	20054
700 x 700	610 x 610	15.66	21997	15.96	18134	17.65	21	18.81	20397
800 x 800	710 x 710	19.98	23387	19.98	18135	20.15	22	23.45	20533
900 x 900	810 x 810	24.76	23388	24.99	18136	27.06	23	28.50	20534
1000 x 1000	910 x 910	30.44	23389	30.56	18137	32.82	24	34.40	20535